

COMUNE DI LAVAGNO

PROVINCIA DI VERONA

REALIZZAZIONE DI UN INTERVENTO  
RESIDENZIALE COSTITUITO DA DUE BIFAMILIARI IN  
LOC. SAN GIACOMO DI SOPRA PER CONTO  
DELLA SOC. "LEADER EDIL IMMOBILIARE s.r.l."

UNITA' - D -



4

Oggetto

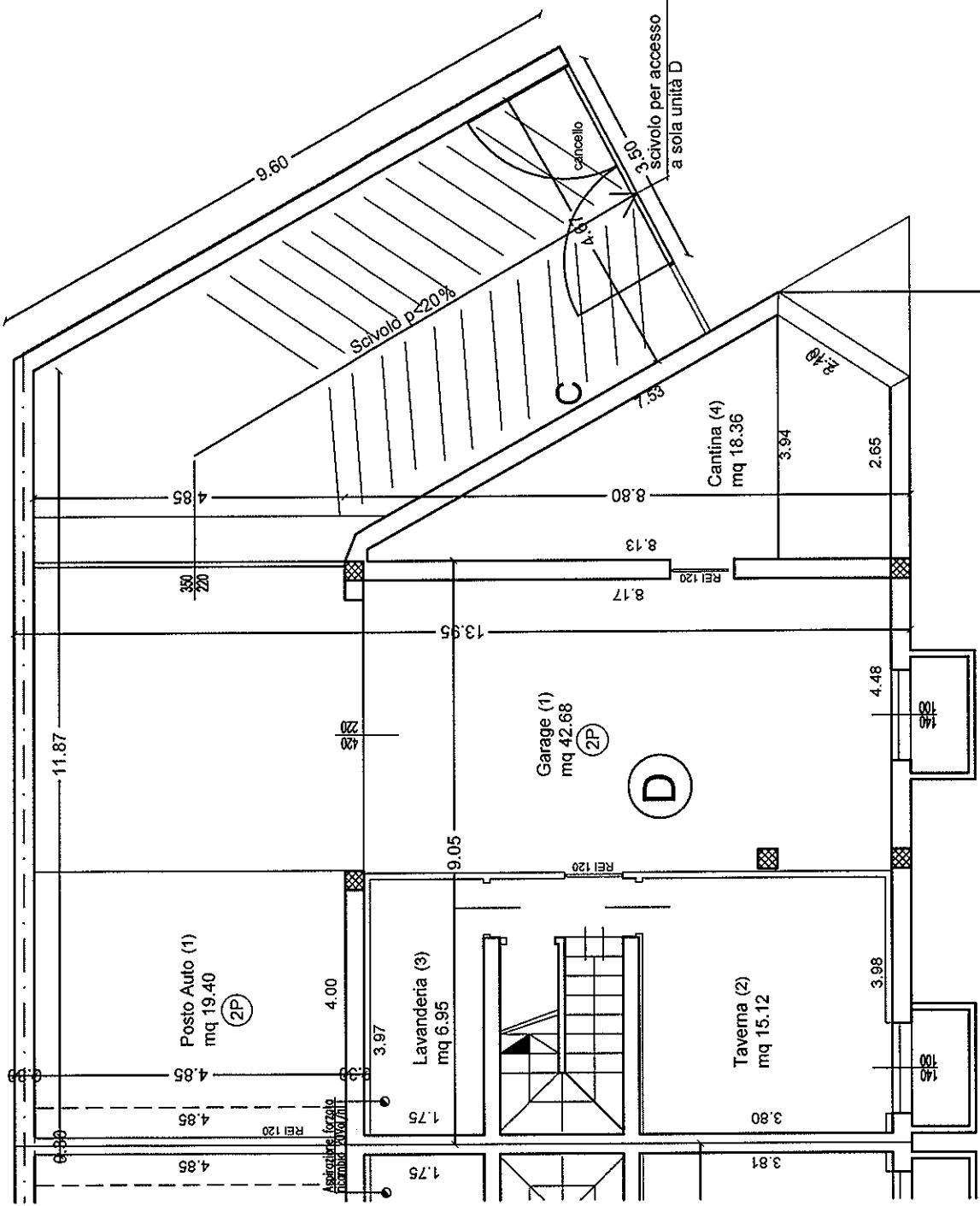
LEADER EDIL IMMOBILIARE s.r.l. - Via Santa Giustina, 2/D, 37031 Illasi VR  
Tel. 045/6529191 Cell.3492648504

# Superfici interne

nette

Unità	N°	DESTINAZIONE	Sup. (mq)	1/8 Superficie (mq)	Sup. Finestrata (mq)
Unità D sup coperta = 72 mq	0	Posto Auto	19.40		
	1	Garage	42.68		
	2	Taverna	15.12		
	3	Lavanderia	6.95		
	4	Cantina	18.36		
		Porticato coperto	9.50		
	5	Soggiorno	28.32		
	6	Cucina	15.48		
	7	Antibagno	2.45		
	8	Bagno	5.34		
	9	Camera Sing.	13.17		
	10	Camera Sing.	12.66		
	11	Camera Dopp.	15.60		
	12	Bagno	7.76		
13	Disimpegno	2.45			
14	Poggiolo	4.40			
15	Poggiolo	9.36			

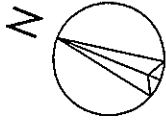
# Pianta Piano INTERRATO



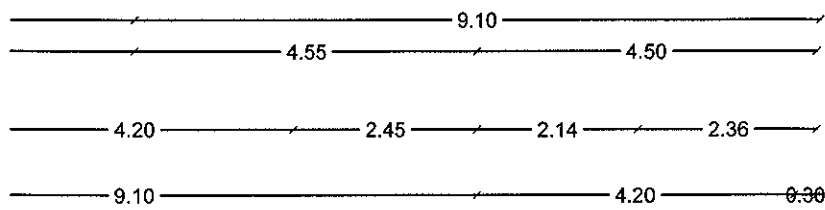
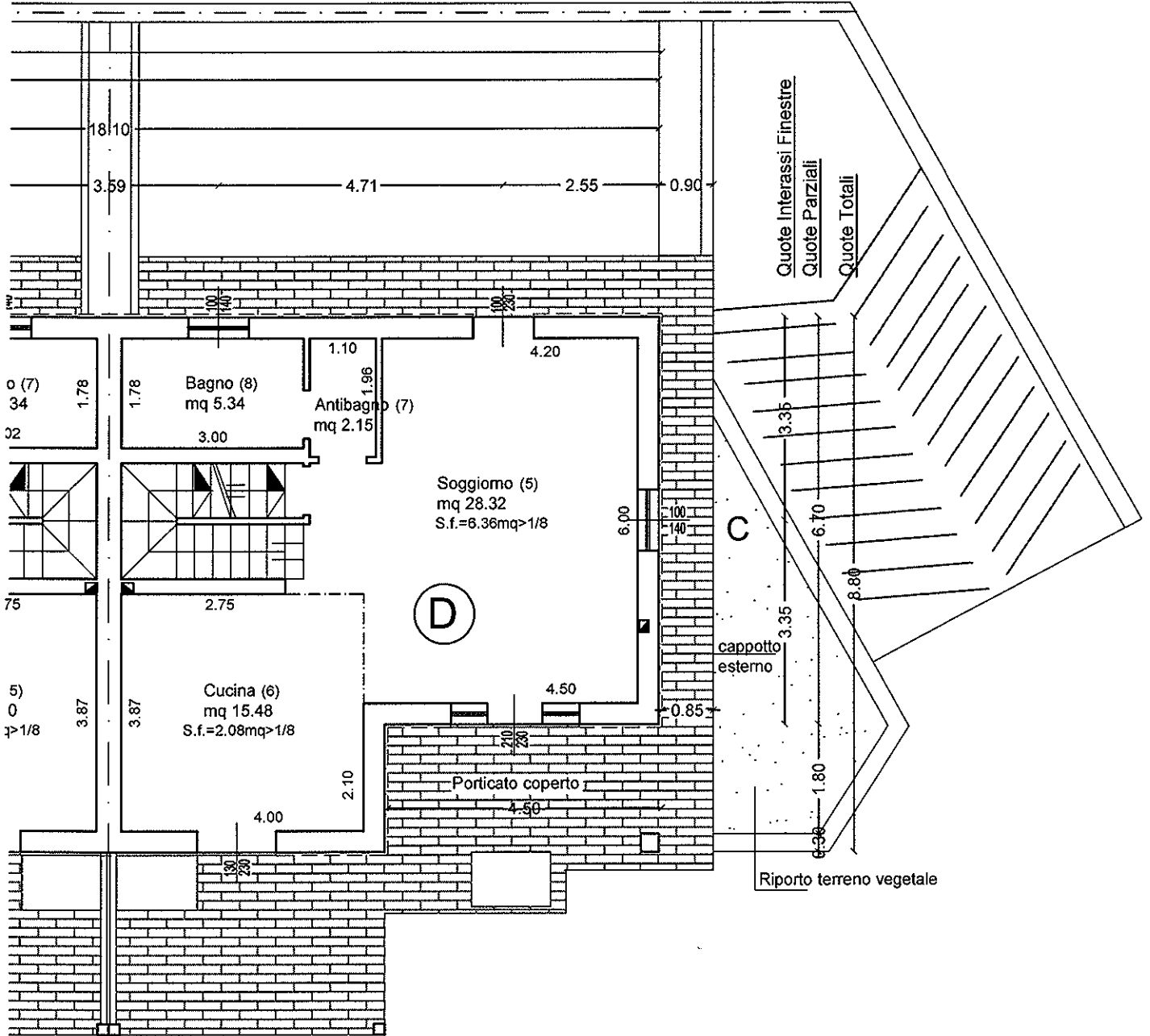
Quote Interassi Finestre

Quote Totali

2.30 5.47 2.43 9.05 4.13



# Pianta Piano TERRA



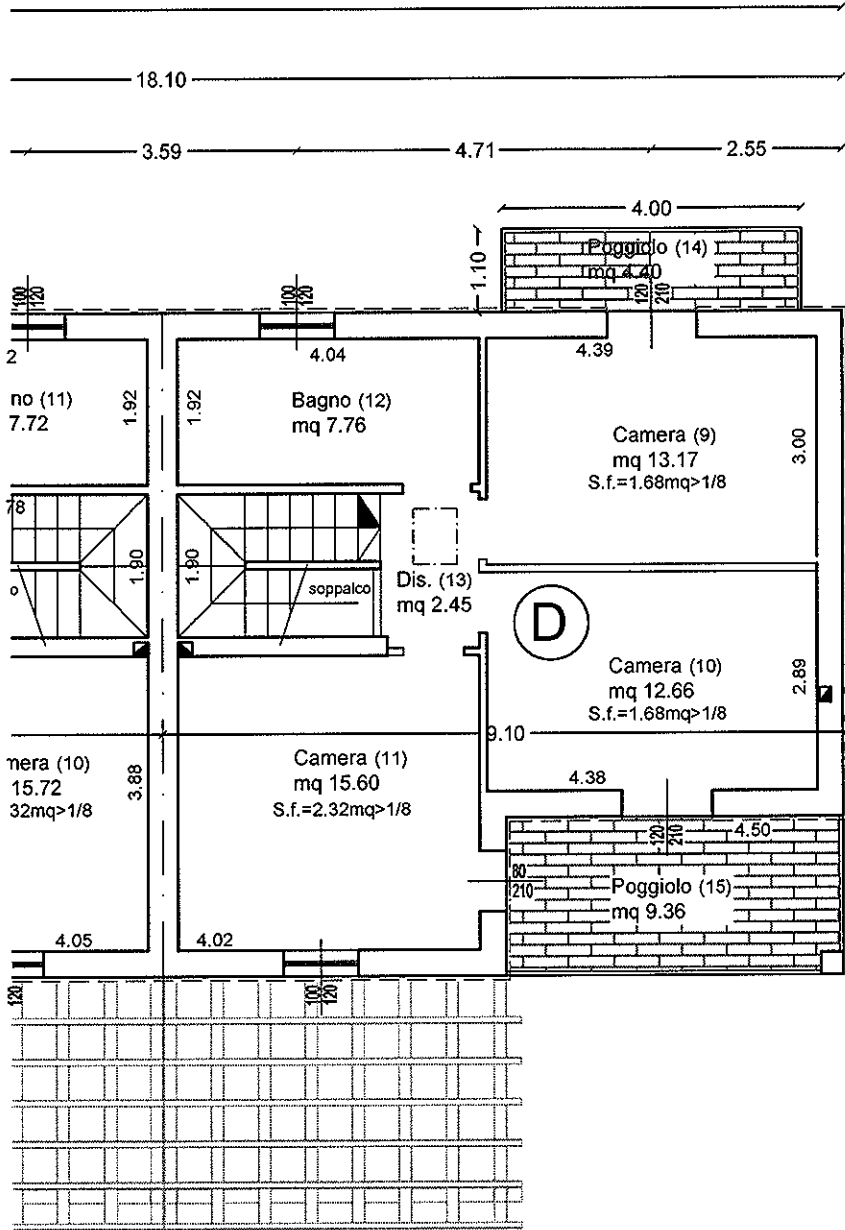
Quote Pergolati

Quote Interassi Finestre

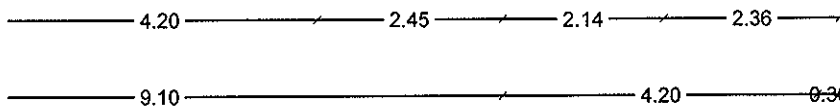
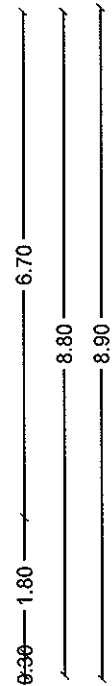
Quote Parziali

Quote Totali

# Pianta Piano PRIMO



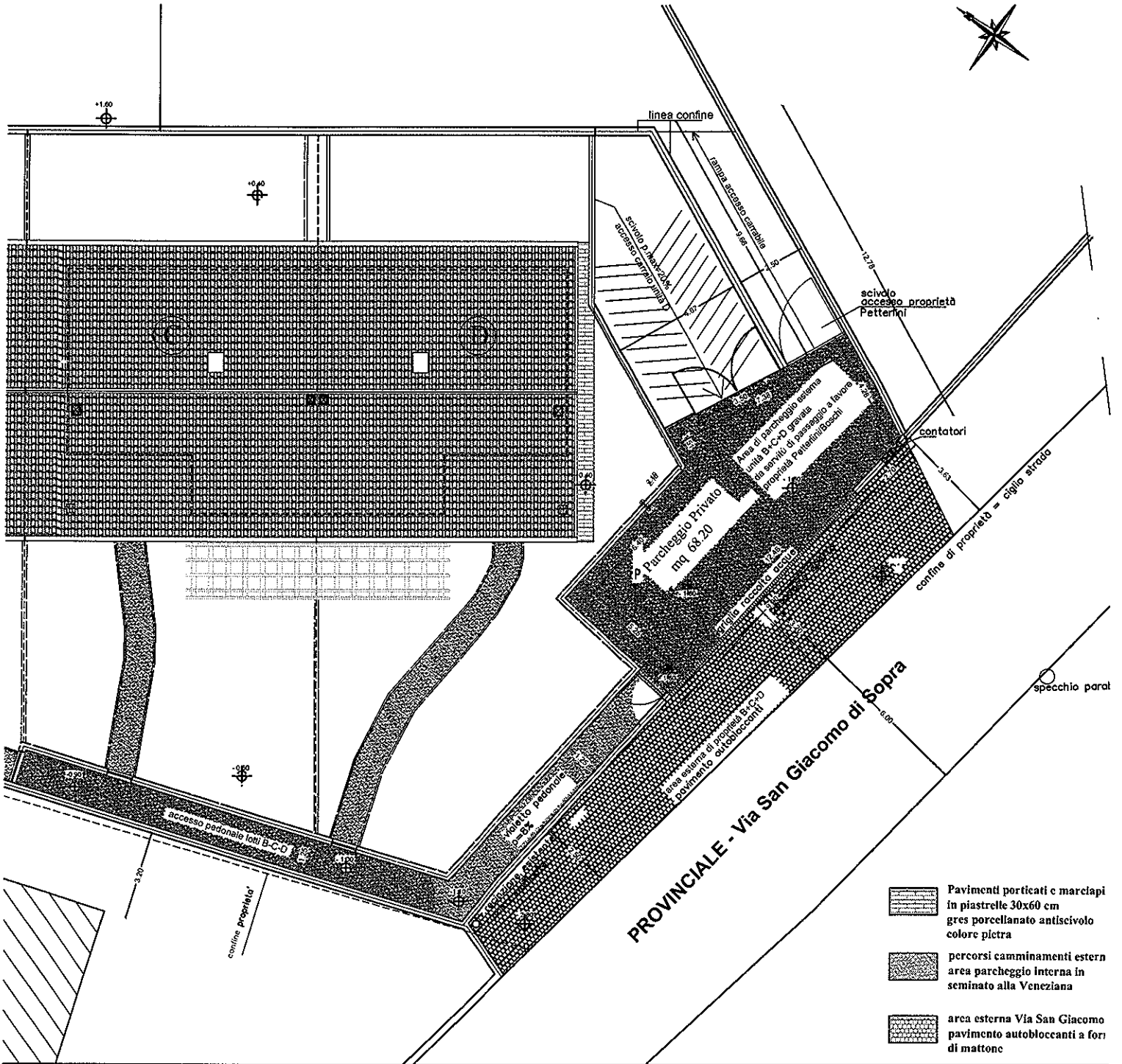
Quote Parziali  
Quote Totali

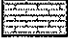




Quote Interassi Finestre

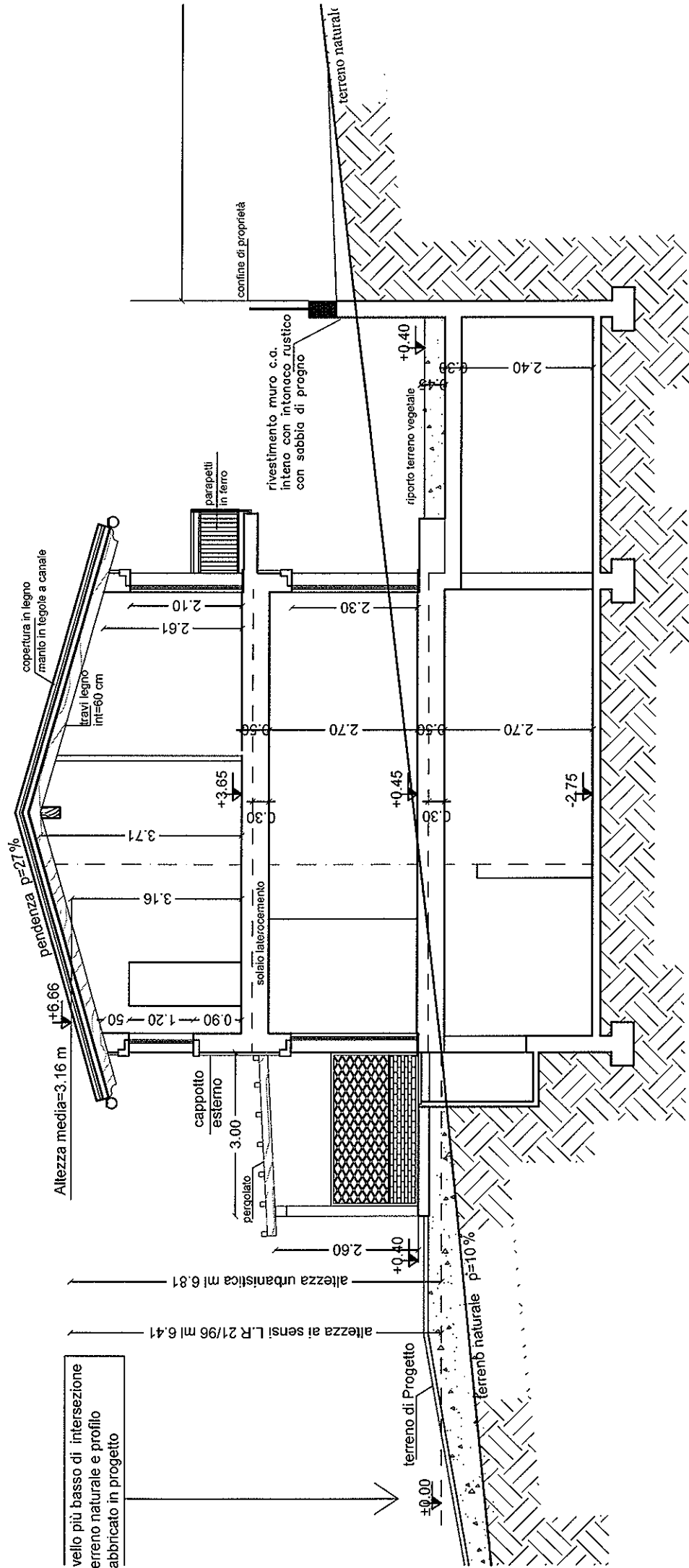
Quote Parziali

Quote Totali

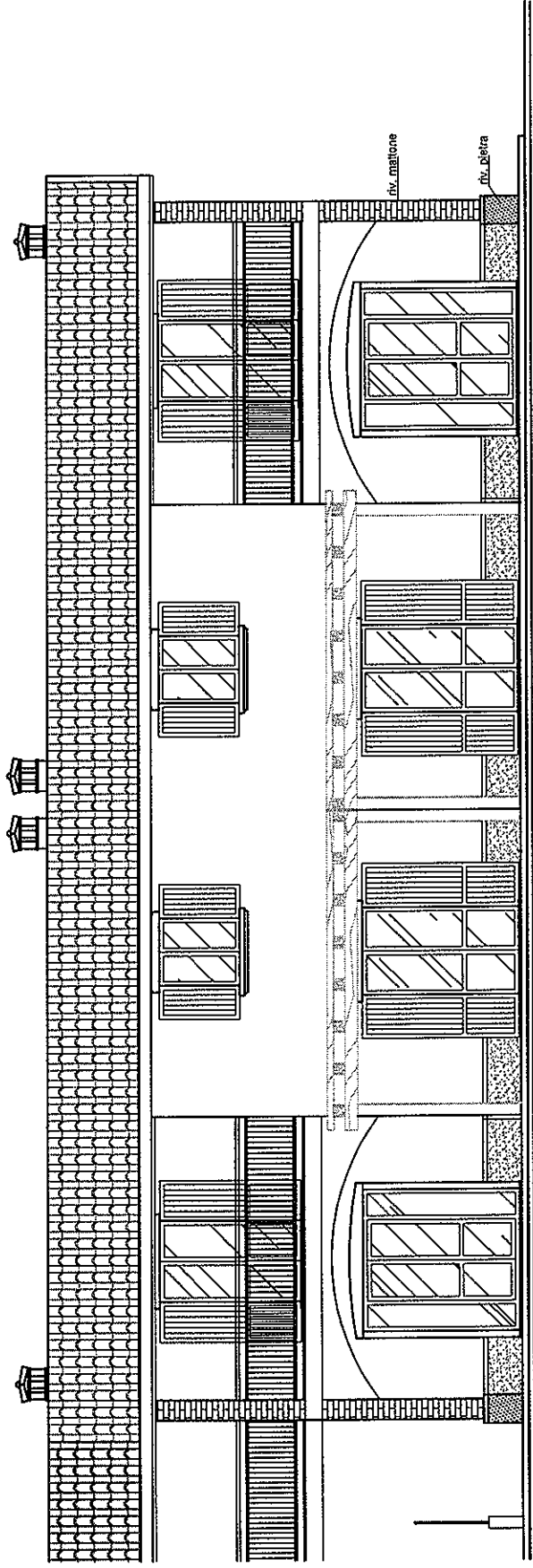


-  Pavimenti porticati e marciapi  
in piastrelle 30x60 cm  
gres porcellanato antiscivolo  
colore pietra
-  percorsi camminamenti esterni  
area parcheggio Interna in  
seminato alla Veneziana
-  area esterna Via San Giacomo  
pavimento autobloccanti a fori  
di mattone

# Sezione B-B Sc 1:100

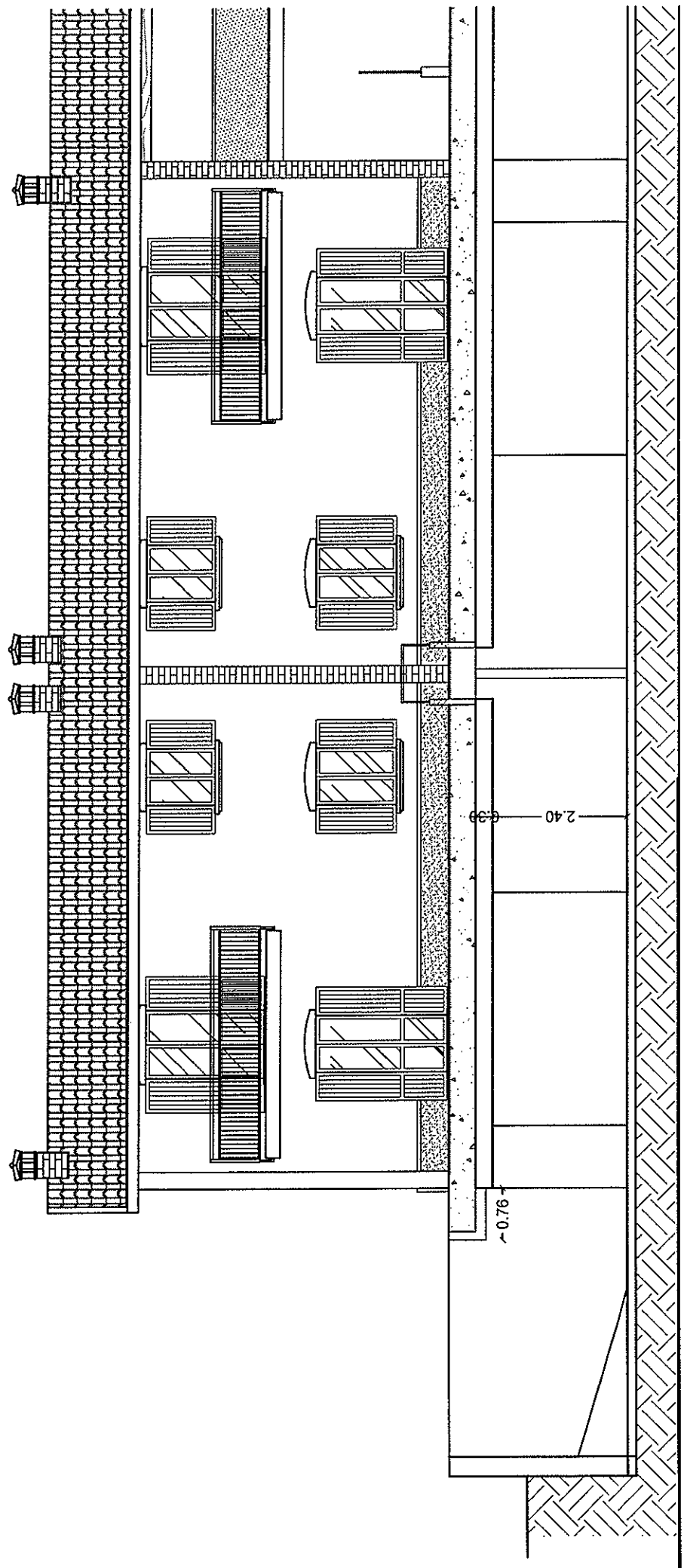


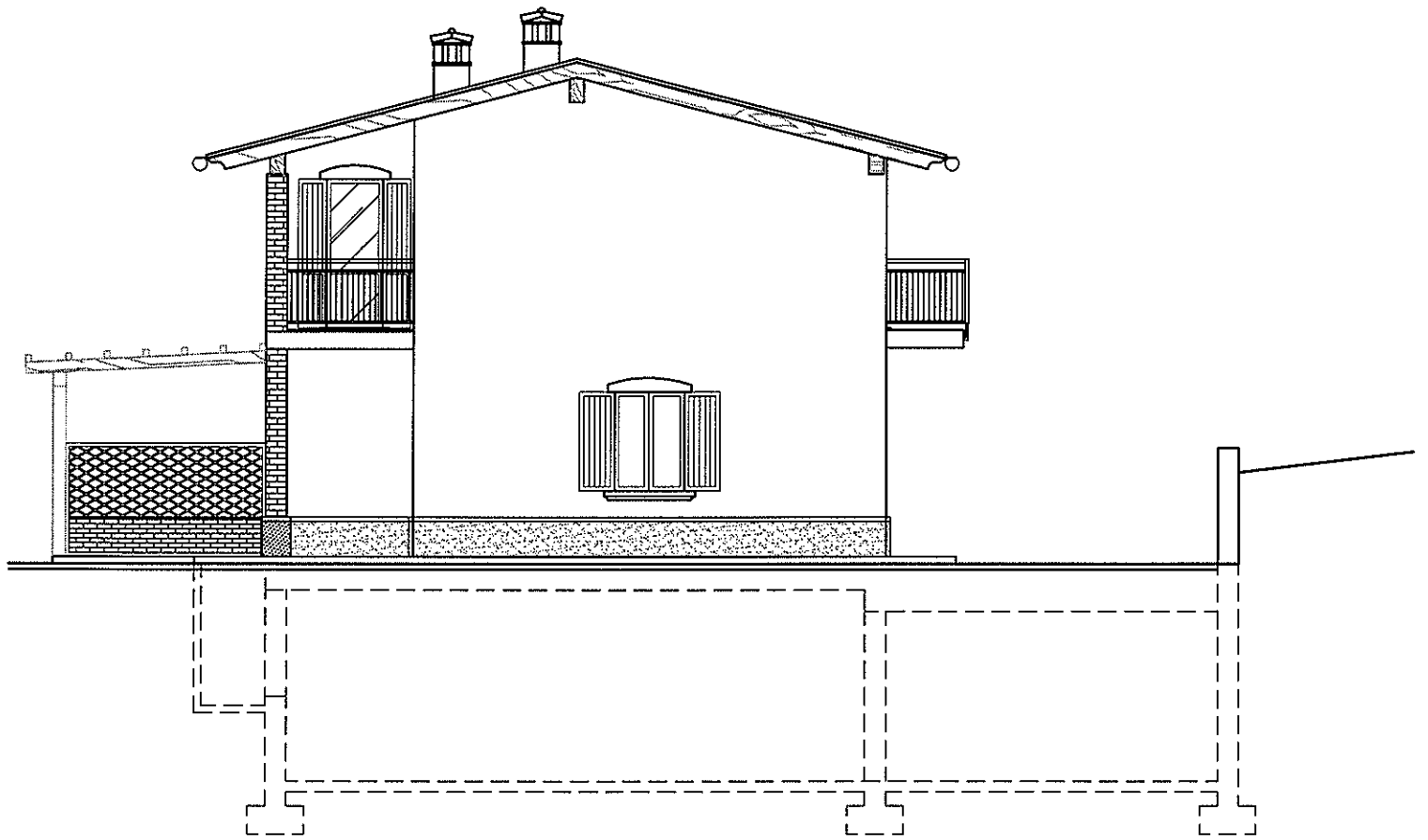
Prospetto OVEST Sc 1:100





Prospetto EST Sc 1:100





Prospetto SUD Sc 1:100